



## Customizable Motors Ranging from Small Hand-Tools to Large Medical Equipment

MTI Motion's brushless motors for medical applications are engineered to be durable, efficient, and reliable over the life of your medical tools and equipment.

### **Meets demanding environmental requirements:**

- Corrosion resistant materials
- Designed to reliably function beyond expected life of tools and equipment
- Can be engineered for autoclave environments
- High-power density designs available to improve battery life
- Existing autoclavable designs from 0.5" diameter to 1.1" diameter
- Custom housing and windings available

# We Make Motors That Work

Since 1946, we've been manufacturing **customized motors, generators, and ball screws** for demanding environments and designed to your performance requirements, weight, and size restrictions. Our expertise in engineering and operational excellence allows us to provide reliable products to our partners all over the world.



Surgical Hand Tools



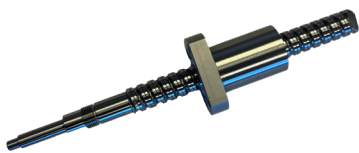
Nuclear Imaging Machine



Prosthetics & Orthotics CNC Machine

## APPLICATIONS:

- Surgical Robots
- Mobile X-Ray Machine
- Bone Saw Surgical Hand Tools
- Motorized Medical Beds



Ball Screws



Generators

MTI Motion's product portfolio includes **custom ball screws** and **power generation** engineered to our standard of quality and designed to your specifications.